

UCLA

Fielding School of Public Health

Executive Programs in Health Policy & Management

Quarterly Update – Fall 2024

The latest news about ExecHPM students, faculty, and alumni.



A LETTER FROM THE DIRECTOR

It's been several months since our last newsletter and so much has transpired. We have an entire new group of ExecHPM Alumni! Congratulations to the Class of 2024! Over 70 healthcare professionals completed UCLA's EMPH and MHA programs this year and were conferred graduate degrees at Commencement on June 14th. We are so proud of you and feel privileged to have been part of your public health journey. We loved meeting your friends and families at the grad luncheon. So much to celebrate! Please keep in touch as you continue to achieve new heights in your careers.

Summer is coming to a close and we are starting the academic year off strong. I am thrilled to introduce in this newsletter our brand-new EMPH fall cohort of 15 participants. The EMPH Class of 2026 started the program on August 23 with classes including Principles of Public Health (Dr. Shira Shafir), Health Systems Organization and Financing (Dr. Burt Cowgill), and Microeconomic Theory of Health Sector (Dr. Dhruv Khurana).

Led by Professor Mike Galper, our second year EMPH students are working on their

summer consulting projects, with subjects ranging from the success of a pharmacist led care management program to the value of utilizing patient stories in providing care to veterans. We look forward to your presentations on November 15th.

With 17 new students starting the program on July 1st for the summer quarter, our online MHA Program continues to grow. We welcomed 28 students to campus last month for MHA Immersion — a great week of team building, professional development, and camaraderie.

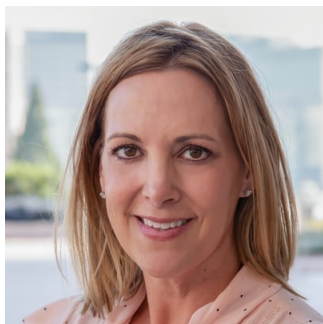
MHA Candidate Srihitha Gaddam has assembled a board and launched UCLA's first ever MHA Student Association (MHASA). With Dr. Laura Erskine as their advisor, they drafted a constitution and are fully operational. Thank you, Srihitha, for your leadership — we are very excited to see the results of the collaborations throughout the MHA cohorts.

It was wonderful seeing so many students, graduates, and healthcare leaders at the “Leaders of Today, Leaders of Tomorrow” Annual Awards Dinner in April. Congratulations to those who joined the honors societies of Delta Omega and Upsilon Phi Delta. Working full-time while achieving academic excellence is quite an accomplishment.

EMPH Sinaiko Business Plan Awardees Dr. Visha Subbiah and Via Moira Ventura were honored at the dinner, along with all of our award winners. The annual Leaders of Today, Leaders of Tomorrow event brings together industry leaders and the UCLA public health community. Looking around the room, we were filled with pride. Thank you to the EMPH students, graduates, and partners who stopped into the Pinnacle Room for interviews. We are so inspired by the work you are doing in the field of public health and love sharing it with our community.

Enjoy the final few days of summer, everyone.

All my best,



Kyle Sullivan, MSW
Director, Executive Programs in HPM

Interim Director, EMPH Program

IMPORTANT DATES

Info Sessions

Please spread the word about our upcoming online Info Sessions. It's a great opportunity for interested applicants to learn about our programs in a live Q&A webinar that covers program curriculum, admissions requirements, and application materials.

EMPH:

October 9, October 10, November 6, November 7, December 3

[REGISTER](#)

MHA:

October 16

[REGISTER](#)

MHA Fall Quarter: Classes begin September 23

MHA Winter Quarter:

Application Deadline is

November 18;

Classes begin January 6

MHA Immersion: October 23-26

HPM Alumni Mixer:

Please join us at the annual HPM Alumni Mixer hosted by HPMSA.

Appetizers and refreshments will be served.

October 18,

5:00 - 8:00pm

[RSVP](#)

Paul Torrens Health Forum:

Please join MHA Program Director and UCLA Center for Healthcare Management

Director Dr. Laura Erskine for the next Paul Torrens Health Forum:

"Community Health Center (CHC) Partnerships with Hospital Systems, Community and Government Entities: A Progress Report." October 16, 5:30pm

[REGISTER](#)



CONGRATULATIONS CLASS OF 2024 – EMPH

Erica Cirineo, MPH

Jerry De Vries, MPH

Vishakha Hariawala, MPH

Ayesha Lee, MPH

Graciela Medina, MPH

Brad Ouellet, MPH

Lori Petrini, MPH

Jamie Ruiz, MPH

Cameron Salehi, MPH

Visha Subbiah, MD, MPH

Via Moira Ventura, MPH



CONGRATULATIONS CLASS OF 2024 – MHA

Alyssa Abernathy, MHA
Erika Abraham, M.D., MHA
Melissa Alvarez, MHA
Nallely Aparicio, MHA
Raman Aravamudhan, MHA, ME
Julie Arroyo, MHA
Nathaniel Badii, MHA
Nisha Balijepalli, MHA
Rachel Bellows, DPT, MHA
Araxia Boghossian, MHA
Laura Bonelli, MHA, BSN, RN
Samantha Brenneman, MHA
Vincent Brullo, MHA
Chad Calendine, MHA
Veronika Danielyan, MHA
Justin Del Rosario, MHA
Lauren Denton, MHA, MA
Katie Duff, MHA
Gavin Feinfield, MHA
Heidy Flores, MHA
Sydney Fong, MHA
Joselyne Franco Kerr, MHA
Deb Franzon, M.D., MHA
Silvano Gonzalez, MHA

Tiffany Wong Gonzalez, MHA

Iskuhi Hovsepyan, MHA

Daniel Jaffurs, MHA

Soni Jain, MHA

Noa Katz, MHA

William Keller, MHA

Julie Kha, MHA

Ruth Kimani, MHA

Matt Kuntz, JD, MHA

Xin Lee, MHA

Brianna Levenson Shakoor, MHA

Kaleb Logan, MHA

Adriana Lopez-Ospina, MHA

Bailee Magnuson, MHA

Aazeen Nasir, MHA

Mina Ognjanovic-Jasovic, MHA

Miguel Onate, MHA

Janaina Ossuna, MHA

Allison Pascual, MHA

Sarah Pramono, MHA

Tiffany Primer, MHA

Mojgan Rafiq, MHA

Brandon Reed, MHA

Yeraldi Vergara, MHA

Olivia Salas-Tapia, MHA

Isabelle Salvador, MHA

Edwin Serna Gonzalez, MHA

Emily Shearon, MHA, RN

Guadalupe Teeran, MHA

Yer Vang, MHA

Dusty White, MHA

Shamari Winbush, MHA

Connie Xu, MHA, RN

Richard Young, M.D., MHA

Leaders of Today, Leaders of Tomorrow Annual Gala

Congratulations to the ExecHPM Class of 2024 honor society members and award recipients, announced at Leaders of Today, Leaders of Tomorrow dinner on April 25.



2024 HONORS SOCIETY MEMBERS



Delta Omega Honorary Society in Public Health

Delta Omega is the national scholastic honorary society established to recognize scholarship devotion to public health principles and outstanding service in public health. Recipients are carefully chosen each year based on academic standing and real or potential qualities of leadership in public health.

Congratulations to our 2024 Delta Omega Awardees:

EMPH

Erica Cirineo, Jerry De Vries, Visha Subbiah, M.D.

MHA

Nathaniel Badii, Rachel Bellows, Vincent Brullo, Joselyne Franco Kerr, Deb Franzon, M.D., Soni Jain, Noa Katz, Brianna Levenson Shakoor, Adriana Lopez-Ospina, Aazeen Nasir, Guadalupe Teeran



Upsilon Phi Delta is the National Honor Society for Health Care Management recognized by health administration professionals and academic institutions. Recipients are carefully chosen each year based on academic standing and overall achievement in the management field.

Congratulations to our 2024 Upsilon Phi Delta Awardees:

EMPH

Vishakha Hariawala, Brad Ouellet, Lori Petrini, Cameron Salehi

MHA

Alyssa Abernathy, Erika Abraham, M.D., Raman Aravamudhan, Nisha Balijepalli, Laura Bonelli, BSN, RN, Justin Del Rosario, Sydney Fong, Tiffany Wong Gonzalez, Sarah Pramono, Connie Xu, Richard Young, M.D.

2024 AWARD RECIPIENTS



EMPH Sinaiko Business Plan Awardees:

Visha Subbiah, M.D. and Via Moira Ventura

The EMPH Program incorporates integrated knowledge, creativity, and applied skills by asking students to create a business plan in the middle of their second year and present to a panel of judges.

The final deliverables—a written plan and an oral presentation—are attributed to three courses as a comprehensive assessment: Strategic Policy & Management, Healthcare Marketing, and Healthcare Finance.

EMPH Ann G. Quealy Award:

Visha Subbiah, M.D.

One recipient is carefully chosen each year by their cohort peers for the Ann G. Quealy Memorial Fellowship Endowment Award based on overall achievement, concern for others, humor, and a desire to reach their highest potential in life while bringing out the best in others.

Congratulations to Visha Subbiah, M.D., our 2024 awardee. Thank you for your positive contributions to the culture of the HPM Department and the EMPH Program.



EMPH Lee Thomassen Healthcare Finance Fellowship:

Cameron Salehi

The Lee Thomassen Healthcare Finance Fellowship provides a scholarship for a second-year student in the EMPH Program who has demonstrated exceptional skills in accounting and finance coursework.

In consultation with program faculty, Cameron was chosen among many outstanding peers for his outstanding work in accounting, and his promise of success in financial management.

Congratulations on a well-deserved award, Cameron.

EMPH Levin-Gordon Scholarship:

Visha Subbiah, M.D.

Based on academic achievement, the Levin-Gordon Executive MPH Fellowship provides a scholarship for a promising second-year student in the EMPH Program.

In consultation with program faculty, Visha Subbiah, M.D., was chosen among many outstanding peers for her exceptional work, leadership, and demeanor during her first year in the program.

Congratulations to Visha on receiving this prestigious scholarship, and we wish you continued success.



MHA Outstanding Student Award:

Deb Franzon, M.D.

The MHA Outstanding Student Award recognizes someone who has demonstrated exceptional academic performance, leadership, and commitment to advancing healthcare management. Congratulations to Deb Franzon, M.D., for her understanding of healthcare policies, innovative problem-solving skills, and passion for improving healthcare systems. She embodies the values of excellence, integrity, and service, setting a high standard for her peers and future healthcare leaders.



Jerry De Vries, MPH



Visha Subbiah, M.D., MPH



Ayesha Lee, MPH



Xin Lee, MHA

Congratulations to our **Public Health Scholarship Program (PHSP) Scholars** in the department of Health Policy and Management.

This Health Resources & Services Administration (HRSA) supported program trains future public health leaders who are committed to eliminating public health inequalities and health disparities in Medically Underserved Areas (MUA).

We are impressed by their dedication to public health and their commitment to supporting underserved communities.

EMPH

Jerry De Vries, Visha Subbiah, M.D., Ayesha Lee

MHA

Xin Lee

FACULTY

Executive HPM draws on the distinguished faculty, programs, and academics of the nationally renowned UCLA Fielding School of Public Health. Courses are taught by leading practitioners and researchers in the field of public health, health policy, and healthcare management, as well as faculty from UCLA's other graduate schools and management-related fields. Their expertise spans clinical practice, applied research, policy analysis, entrepreneurship, and consultation at the local, national, and international level.



Dr. Laura Erskine Newly Elected Member of AUPHA's Board of Directors

Congratulations to UCLA Professor and MHA Program Director Laura Erskine, PhD. She was recently elected to the Board of Directors of the Association of University Programs in Health Administration (AUPHA), a global network of colleges, universities, faculty, individuals, and organizations dedicated to the improvement of health and healthcare delivery through excellence in healthcare management and policy education. AUPHA's mission is to foster excellence and drive innovation in

health management and policy education and promote the value of university-based management education for leadership roles in the health sector.

AUPHA's membership includes the premier baccalaureate, master's, and doctoral degree programs in health administration education in the United States, Canada, and around the world. Its faculty and individual members represent more than 300 colleges and universities.

ExecHPM Welcomes Dr. Yvonne Flores, Linda Magara Horner, and Dr. Sophie Snyder to our Faculty

A warm welcome to three professors who joined our ExecHPM faculty over the summer: Dr. Yvonne Flores, Dr. Sophie Snyder, and Linda Magara Horner, MBA. We are thrilled to have them join our faculty and look forward to the knowledge and experience they bring to our executive programs.



Dr. Yvonne Flores | EMPh Program | Year 2 | Spring Quarter | HPM 240 - Global Health Institutions, Policies, and Systems

Dr. Yvonne Flores, is a Professor in the Department of Health Policy and Management and a research scientist at the Center for Cancer Prevention and

Control Research. She is also a member of the UCLA Kaiser Permanente Center for Health Equity and the Jonsson Comprehensive Cancer Center. Additionally, Dr. Flores is an investigator at the Mexican Social Security Institute (IMSS), where she has led numerous bi-national projects since 2000.

Dr. Flores was born in Mexico, where she grew up in a bilingual and bicultural family. She uses her training in Health Services and Epidemiology to conduct research that focuses on the prevention of chronic diseases and reduction of health disparities among underserved populations. Three themes consistently guide her work: (1) a focus on reducing health disparities among Latinos and other minority groups; (2) a transdisciplinary approach to research that incorporates different disciplines and skills to solve complex public health problems; and (3) bi-national collaborations that bring together researchers and students from UCLA with investigators from institutions in Mexico.

Her research includes studies on breast, cervix, and liver cancer, with a focus on risk factors, knowledge, and prevention practices, as well as the improvement of screening programs. Other work has focused on hepatitis C screening in Mexico, obesity-related diseases including cardiovascular disease, diabetes and liver disease, as well as the use of HPV screening and vaccination to prevent cervical cancer. Dr. Flores incorporates different methodological approaches in her research, which include primary data collection, analysis of large data sets (e.g. SEER, NHANES), cost-effectiveness analyses, and other types of economic evaluation studies. She also conducts biologically-driven research with clinical and laboratory data to identify molecular and genetic markers for detection and treatment of disease.



Linda Magara Horner | MHA Program | HLT ADM 404 - Healthcare Strategy

Linda Magara Horner, MBA, is a Partner at Uplifting Capital, an impact investment firm specializing in constructing private asset portfolios for individuals and institutions. The firm focuses on investments designed to deliver strong financial returns while driving meaningful positive environmental and societal outcomes. Linda leads corporate strategy initiatives and participates in investment activities, including fund manager sourcing, due diligence, impact strategy, and portfolio monitoring. At the firm, she leverages her background to spearhead the diligence of healthcare impact investments.

Before joining Uplifting Capital, Linda was the Director of Corporate Strategy at SCAN, one of the nation's largest Medicare Advantage not-for-profit organizations—at \$4 billion in revenue—focused on addressing the most significant issues in healthcare for older adults. Before SCAN, she was a Global Product Manager, working on upstream product strategy and evaluating acquisitions and strategic partnership opportunities for Medtronic's deep brain stimulation product. Prior to that, Linda worked on leveraged finance transactions at Credit Suisse in the Financial Sponsors Investment Banking Group and finance at Aetna, performing financial due diligence on healthcare providers of various sizes under risk delegation contracts. She began her career at Deloitte & Touche in their audit practice, where

she became a California Certified Public Accountant (currently inactive).

Linda holds an MBA from the Tuck School of Business at Dartmouth College, where she attended as a Toigo Foundation, Consortium for Graduate School Management, and Dartmouth Global Health Fellow. She also has a BS in Business Administration, Accounting from The Master's University, Summa Cum Laude. Linda holds certifications in human-centered strategy from IDEOU, impact measurement from the University of Oxford, and impact investing from the CFA Institute (UK). Outside of work, she is a leadership coach in the Tuck School of Business' Personal Leadership Program, serves as Vice Chair of the Board for Action in Africa, and is on the Advisory Board of the National Black MBA Association – Los Angeles Chapter.

Dr. Sophie Snyder | EMPH Program | Year 2 | Fall Quarter | HPM 441 - Data Analytics: Identifying, Collecting, and Analyzing Data in Healthcare

With a PhD in Political Economics from the UCLA Fielding School of Public Health and over 20 years of diverse experience, Dr. Sophie Snyder specializes in market access, policy analysis, academic research, health economics and outcomes research (HEOR), and private equity. Her expertise provides unique insights into the political and economic dynamics of pharmaceutical, medical devices, and diagnostic manufacturing.

Currently, Dr. Snyder's research focuses on cell therapy policies, business economics, pharmaceutical supply chains, and advanced econometric methods for causal inference using real-world evidence. She has a deep passion for data analytics, policy analysis, modeling, and econometrics, having developed numerous internal tools, pricing analytics systems, and strategic development frameworks for clients.

In addition to her professional pursuits, Dr. Snyder enjoys training and managing teams, sharing her passion for health as a cycling and yoga instructor at Equinox, and contributing to public health interventions from her time as a graduate student researcher at UCLA.

**EXECUTIVE MASTER OF PUBLIC HEALTH (EMPH)
PROGRAM**

Welcome New EMPH Participants and Returning Second Years

Announcing 15 new EMPH participants in our Fall 2024 cohort. With 90+ years of

collective experience in diverse areas including healthcare policy, clinical laboratory science, sexual health education, surgery, behavioral health, nursing, emergency management, and healthcare administration, the participants started classes on August 23.

UCLA Fielding School of Public Health
**Executive Programs in
Health Policy & Management**

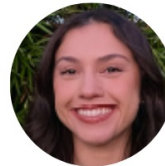
EMPH Year 1 Participants



Kennedy Anderson



Emily Brown



Maya Camacho



D'Artagnan DeBow



Nicollette Doomany



Sarah Hakakha



Tiffany Liu



Marina Martinez



Maite Medina



Jocelyn Mendoza



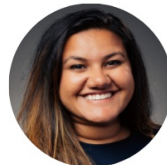
Zachary Morganstein



Alexa Osime



Miguel Ramirez



Trishna Singh



Rui Zhao

EMPH Summer Consulting Projects

Professor Mike Galper is leading EMPH Year 2 students in their summer consulting projects. Eunice Ninet and Alvin Wong have selected Cedars-Sinai and plan to work on improving employee well-being. Alan Rozet and Vanessa Villafuerte are working with Agilon Health evaluating success factors of a pharmacist-led care management program. Lisa Edwards and Elías Rodríguez have partnered with the VA of California on the value of using patient stories in providing care to veterans. Ray Chandler has teamed with a private consultancy company leveraging Health Economic Analysis (HEA) to evaluate distress and vulnerable factors for bankruptcy predictors. Dayana Nieto Flores, Daisy Wang, and Nikki Morales are working with LA General Hospital improving the connection between emergency room patients and proper primary care resources.



Ray L. Chandler, II



Lisa K. Edwards



Nikki Morales



Dayanara Nieto Flores



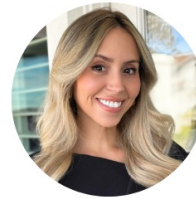
Eunice Ninet



Elías Rodríguez



Alan Rozet



Vanessa Villafuerte



Daisy Wang



Alvin Wong

We look forward to seeing our second year EMPH candidates present their findings during Session 7 of Fall Quarter, on November 15.

MASTER OF HEALTHCARE ADMINISTRATION (MHA)

Dr. Srihitha Gaddam Forms MHA Student Association

Congratulations to MHA Candidate Srihitha Gaddam and her board for their foresight and leadership to launch UCLA's first ever MHA Student Association (MHASA). With Dr. Laura Erskine as their advisor, they are fully operational.

"Aligning with my sincere intentions, I found an amazing bunch of people on the board with me who are equally enthusiastic and passionate about the association. Together, we will lay a strong foundation for our association so our juniors can grow on it for generations." - Srihitha Gaddam, Founder and President of MHASA

Newly Elected MHASA Board



Madison Knight - Co-President



Brandy Duong - Co-President



Gene Salgado - VP of Academic Excellence



Leng Tang Ritchie - Co-VP of Professional Development



Alexandra Agate - Co-VP of Professional Development



Shayok Dutta - Co-VP of Professional Development



Chris Pogar - Co-VP of Marketing



Karisa Kanachki - Co-VP of Marketing



Anabel Guzman - VP of EDI



Angelica Brightmon - VP of Finance



Kiani Jackson - VP of Communication

Special thanks to our out-going board members as they pass the torch to the incoming group. We thank you for your service and are thrilled to see that some of you have stayed on for the new term:

Srihitha Gaddam, Founder and President
Leng Tang-Ritchie, VP of Professional Development
Madison Knight, VP of Academic Excellence
Nari Shin, VP of Finance
Chris Pogar, VP of Marketing
Brianna Patterson, VP of Equity, Diversity, and Inclusion
Anabel Guzman, VP of Communication



MHA Immersion

Immersion is held each quarter and brings online students to campus twice during their studies. Summer Quarter Immersion was July 31 - August 3, and MHA candidates participated in an invigorating schedule of professional development sessions, team-building exercises, and networking. We're looking forward to Fall Quarter Immersion, October 23-26.

Welcome New MHA Candidates

One of the highlights of our online MHA Program is the flexibility. Students can begin their graduate studies in any quarter. Congratulations to the following MHA

candidates who started the program on July 1st:

Heidi Bautista
Judith Calderon
Lanisha Cole
Marcus Dillard
Hellen Diomi
Isaac Gonzalez
Nilan Aaron Gunewardena
Taylor Oberhelman-McLeod
Chaulette Palafox

Eleonore Pareja
Pricilla Reyes
Jenny Rivera
Crystal Salinas
Jason Shipley
Alexander Smith
Paloma Tirado
Javier Valdez
Francis Yau

ALUMNI UPDATES

The UCLA Fielding School of Public Health Executive Programs in HPM Alumni Network includes over 700 graduates committed to making a difference in the field of public health. Nothing brings us more joy than sharing your important work with our community. Please notify us of your professional updates for an opportunity to be featured. Just send us an email at exechpm@ucla.edu or feel free to DM or tag us on [LinkedIn](#).

EMPH

[Angela Castro, MPH](#) (EMPH '20) started a new position at Washington State Health Care Authority as a Contract Manager.

[Randall Espinoza, MD, MPH](#) (EMPH '02) started a new position as Center Director at University of Washington Medical Center.

[Audrey Fisher, MPH, FACHE](#) (EMPH '04), Virginia Heart CEO, has obtained a new certification: Certified Lean Healthcare Professional from Six Sigma Global Institute.

[Lance Brett Hall, MPH](#) (EMPH '23) started a new position as a Health Science Specialist at the U.S. Department of Veterans Affairs.

[Justin Henderson, MPH](#) (EMPH '08) started a new position in Partnerships and Outreach at Insight Counseling Centers in Nashville, TN.

[Sophie Li, MPH](#) (EMPH '21) started a new position as the Associate Director of Healthcare Analytics at Guidehouse.

[Bianca Natt, MPH](#) (EMPH '22) was recently hired at Cedars-Sinai as a Senior Strategy Associate.

[Cameron Salehi, MPH](#) (EMPH '24) is now attending UC San Diego School of Medicine, as of this fall.

[Raina Sinha, MD, MPH](#) (EMPH '11) started a new position as a Congenital Heart Surgeon at Methodist Children's Hospital in San Antonio, TX.

MHA

[Alyssa Abernathy, MHA](#) (MHA '23), started a new position as a Coordinator of Patient Safety and Risk at UCLA Health.

[Erika Abraham, M.D., MHA, CHCQM](#) (MHA '23) started a new position as Physician Advisor at CommonSpirit Health.

[Julissa Cuison](#), MHA Candidate, started a new position as a Quality Consultant – Ambulatory Quality at Stanford Health Care.

[Maria Estrada, MHA](#) (MHA '23), started a new position as Program Manager (Pathology & Laboratory Medicine) at David Geffen School of Medicine at UCLA.

[Nicole Holmes, MHA](#) (MHA '23), has a new position at WelbeHealth, as the Sr. Director of Integrated Services.

[Tanvi Kore](#), MHA Candidate, started a new position as Professional Practice Evaluation Program Coordinator at El Camino Health.

[Brianna Levenson Shakoor, MHA](#) (MHA '23), started a new position as an Administrative Fellow at University of Pittsburg Medical Center (UPMC).

[Subashini Maloney](#), MHA Candidate, started a new position as Director of Administration at The More We Love.

[Stephanie Morillo, MHA](#) (MHA '23), started a new position at UCLA Health, doing academic research for the Semel Institute for Neuroscience and Human Behavior.

[Jamie Pham, MHA](#) (MHA '23), has been promoted to Internal Auditor at Children's Hospital Los Angeles (CHLA).

[Summer Sanchez](#), MHA Candidate, started a new position as a Surgical Coordinator at Cedars-Sinai.

[Emily Shearon, MHA, RN](#) (MHA '23) obtained a new certification: Nurse Executive (NE-BC) and started her Doctor of Nursing Practice at San Jose State University.

[Connie Xu, MHA, RN](#) (MHA '24) is now a Nursing Quality Management Coordinator at Stanford Health Care.

The world-renowned **UCLA Fielding School of Public Health** harnesses the resources and expertise of the #1 public university in the U.S. to develop proactive leaders who will shape the future of healthcare.

Housed within the Fielding School, the Executive Programs Office in the Health Policy and Management Department offers two executive degree programs designed for working professionals: Executive Master of Public Health (EMPH) and

Online Master of Healthcare Administration (MHA).

Follow us on social to stay engaged with UCLA's Executive Programs in Health Policy and Management and our community.



UCLA Fielding School of Public Health
650 Charles E Young Dr S
Los Angeles, CA 90095
(310) 267-5600

Update your [Email Preferences](#) or [Unsubscribe](#)

verticalresponse
Marketing. Just Like That.